



SAM-BA® USB Notice

The sam-ba 2.13 or later provides USB signed driver for Windows(XP, Viata, Win7, Win8)

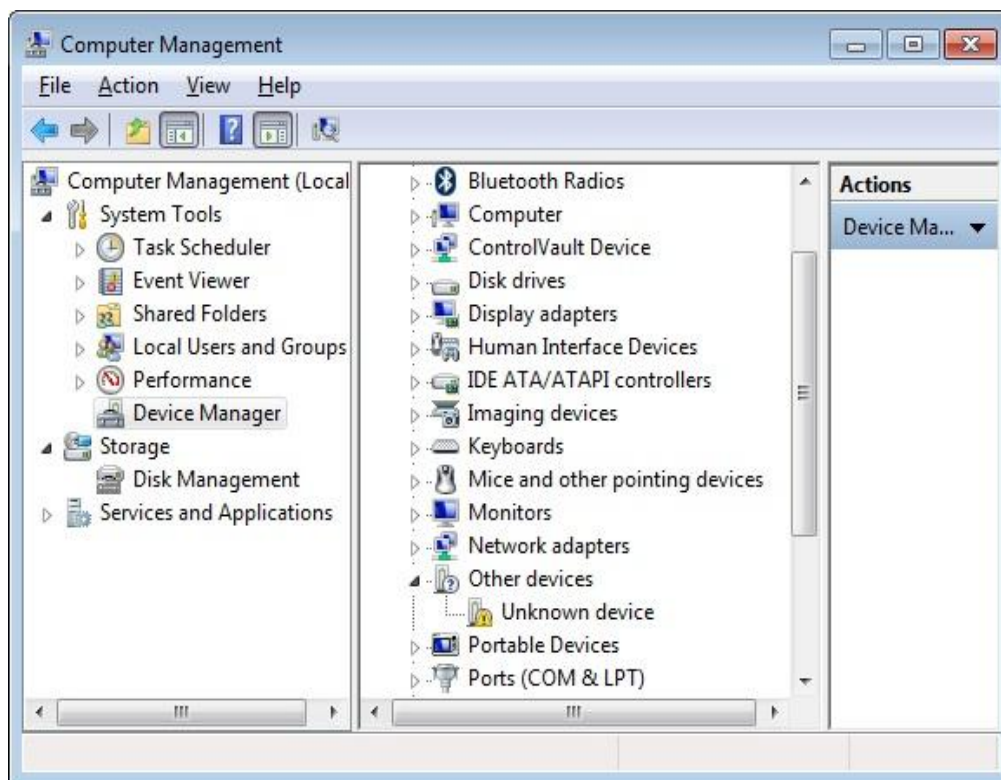
This instruction will guide you through the installation of sam-ba USB driver.

CASE 1: It is my first time to install SAM-BA (never installed previous version of SAM-BA)

The following steps are explained for Windows 7, but very similar for the XP, Vista and Win8.

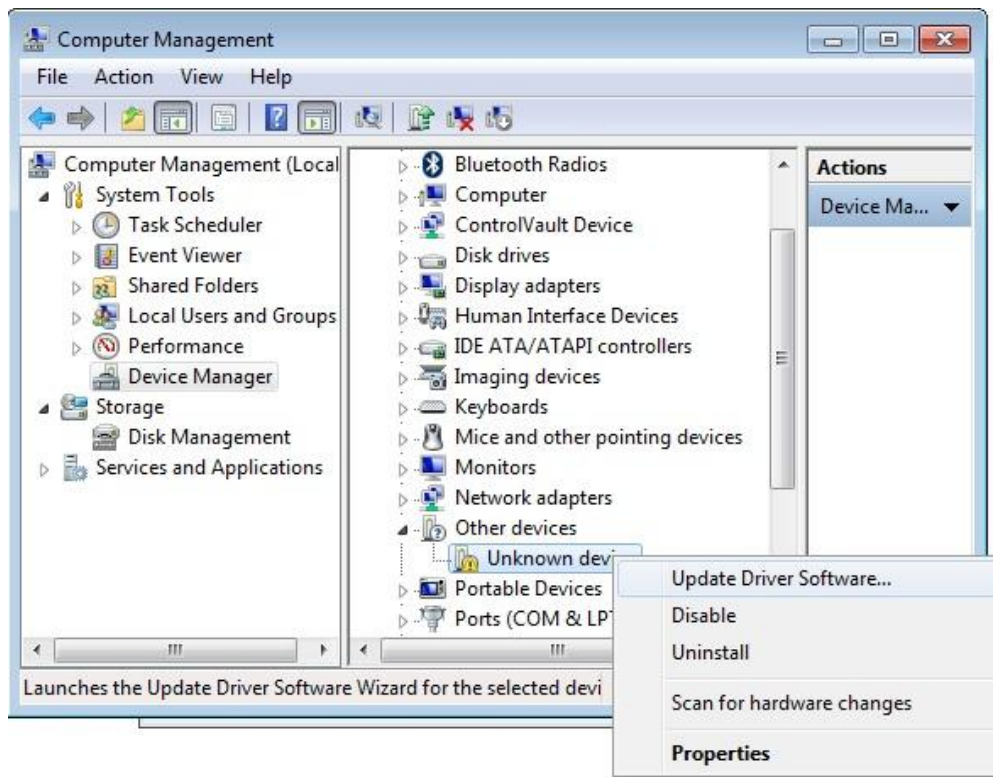
Connect board

Connect the board to the computer via a USB port and power it on,
Click on Windows button, Right click on computer and click on "Manage", Select "Device Manager" on the left hand side



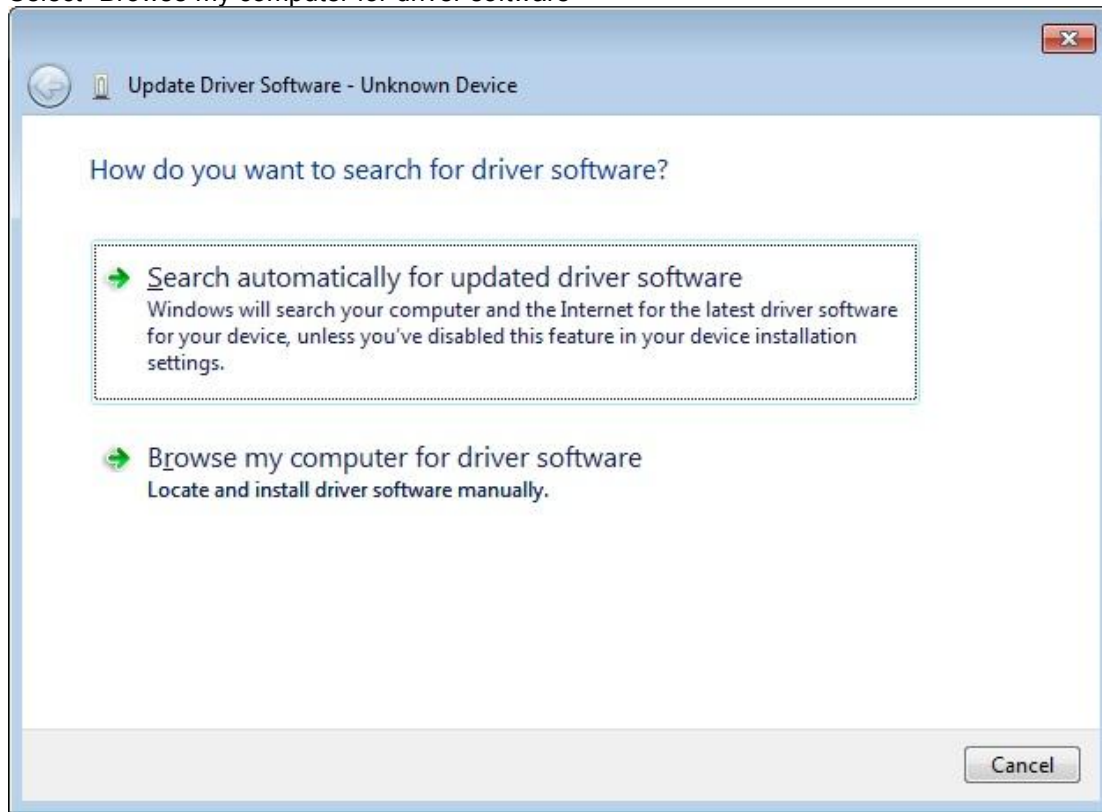
Update driver

Right click on the "Unknown device"
Select "Update Driver Software"



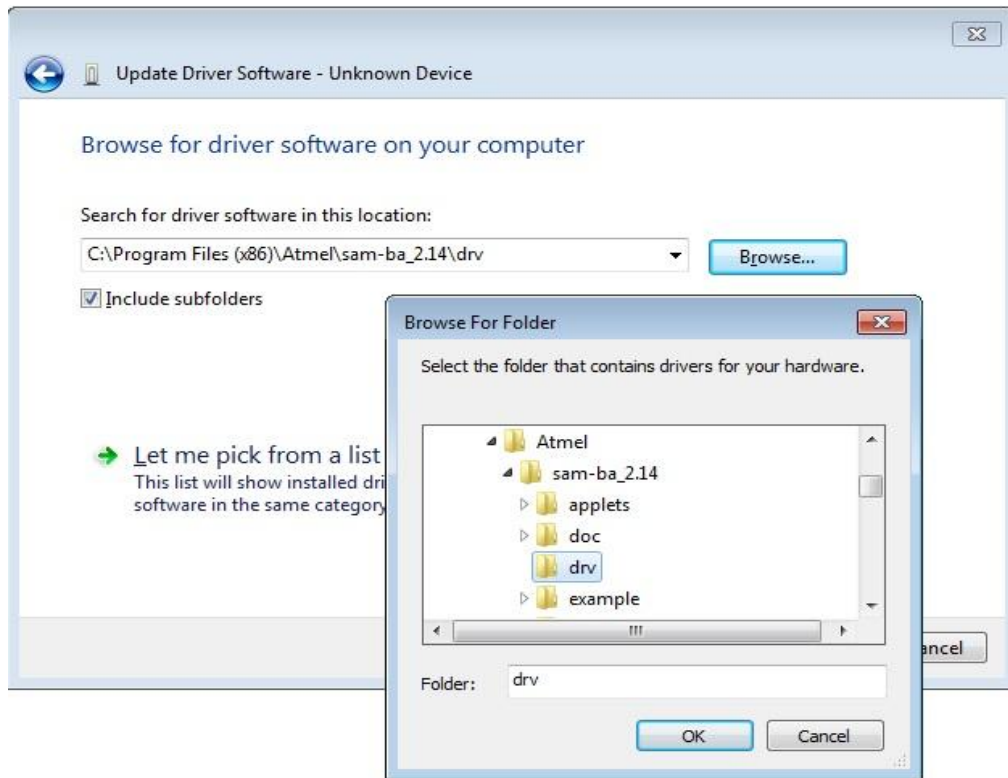
Install driver manually

Select "Browse my computer for driver software"



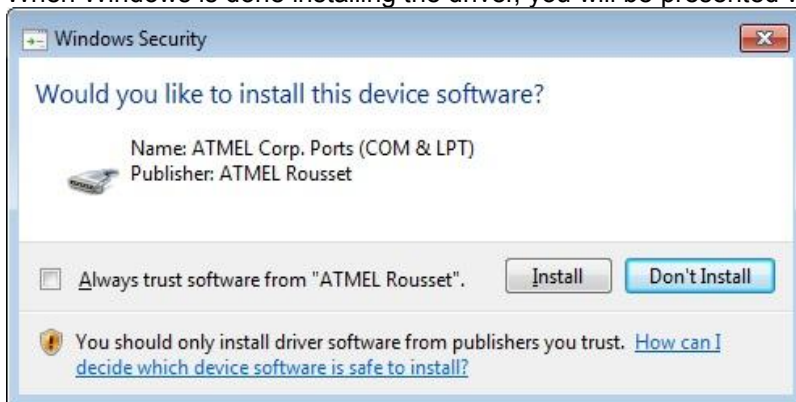
Navigate driver folder

Navigate to the sam-ba install folder that contains the sam-ba driver



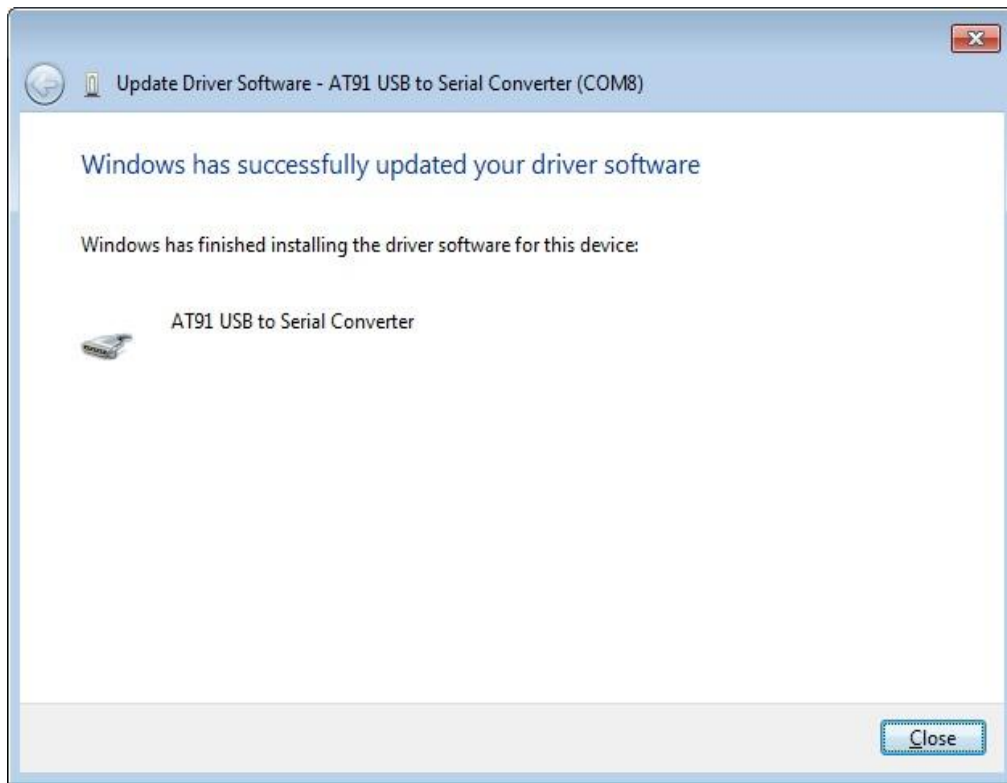
Complete USB installation

When Windows is done installing the driver, you will be presented with the following window



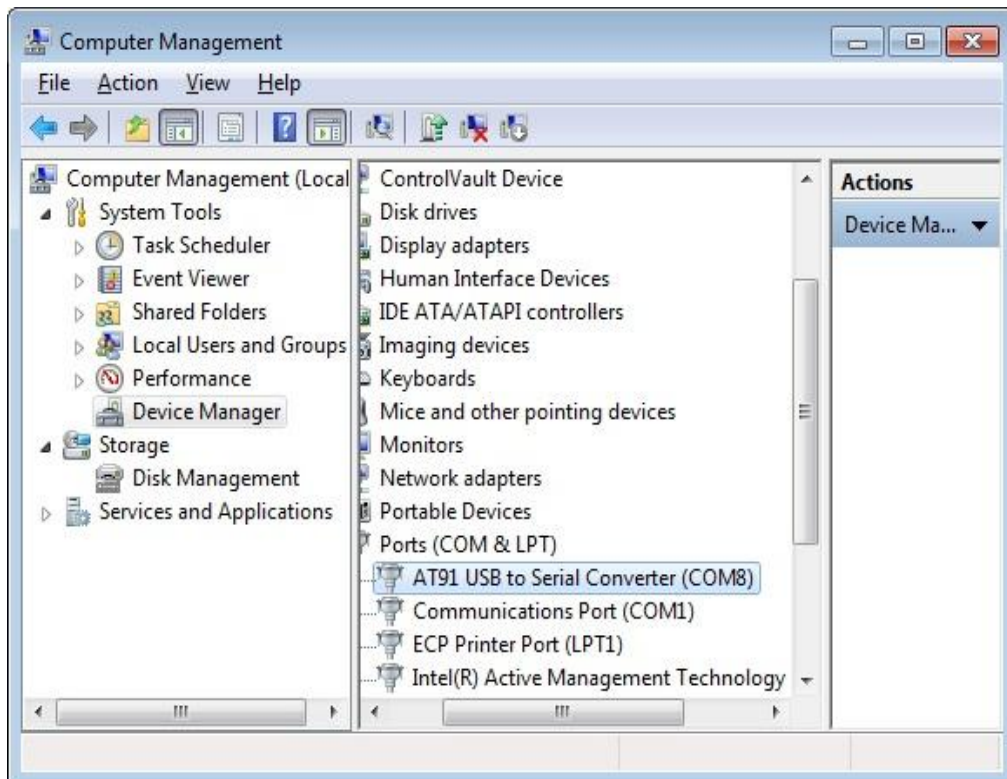
Driver installed

Now the usb driver "AT91 USB to Serial Converter" has successfully updated.



COM port

With Windows system, the USB CDC driver will automatically be assigned a COM number, such as COM8 or COM 25, and can be found with Windows Device Manager.



CASE 2: I have installed SAM-BA 2.12 or previous version before.

We recommend to update you USB driver with latest signed USB driver.

CASE 3: I have installed SAM-BA 2.10 or previous version before, and the usb port is recognized as "ATMEL AT91xxxxx Test board".

That means a previous version of USB driver (atm6124.sys) was already installed from previous versions of SAM-BA, you have to uninstall this driver first, and re-install latest new USB driver.